

west
THE PROPERTY CONSULTANCY



TO LET

58 St Georges Manor, Littlemore, Oxford, OX4 4TW

£2,350 PCM

- A sumptuous ground floor apartment
- One of the premier properties within St Georges Manor
- Glorious main reception room with large stone bay
- Contemporary fully equipped kitchen
- 3 Beautifully appointed bedrooms
- 2 stylish bath / shower rooms
- Elegant high ceilings and large sash windows
- AVAILABLE FROM Late June 2026
- All set in private 13.5 acres of landscaped gated parkland
- Short walk to a Thames side health club

ST GEORGE'S MANOR - bordering Sandford On Thames
Central Oxford c.2.4 miles, Oxford Station c.2.8 miles

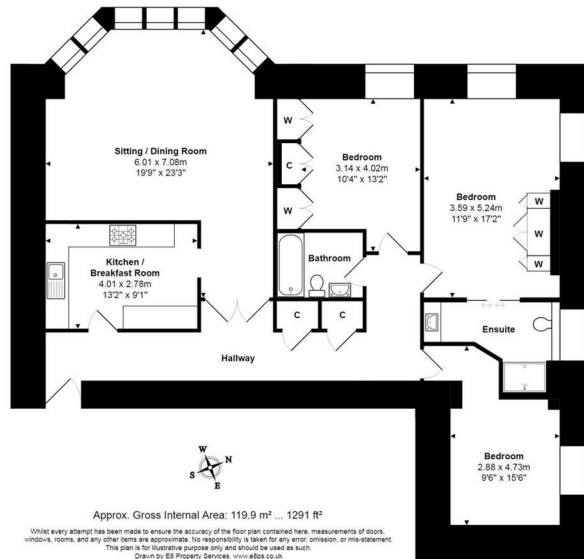
One of the statement grand apartments within the stylishly converted Grade II Listed St George's Manor. Set in a gated private 13.5 acre park, this sumptuous unfurnished apartment offers a wonderful high ceilinged sitting room with a large stone bay window overlooking the park, a contemporary fully equipped kitchen, very stylish bath and shower rooms and an elegant reception hall. The property offers dedicated secure parking. A walk away from a health club on the River Thames on the periphery of Sandford on Thames and likewise a walk away from a large Sainsbury's superstore. Bus service and cycle lane to Oxford City Centre. (TOTAL FLOOR AREA c.1321 sq ft)

QUOTING RENT: £2,350pcm

PROPERTY AVAILABLE FROM LATE JUNE 2026

THE PROPERTY

A VERY SPECIAL AND SUMPTUOUS LARGE SCALE GEORGIAN APARTMENT IN A PARKLAND SETTING



SITUATION

Contact: Gavin West
(t) 01865 510000 (e) gavin@west-tpc.co.uk

A holding deposit of 1 weeks rent will apply and be taken when an application is accepted by the landlord to secure a tenancy through WEST - The Property Consultancy. Please contact the office for further details if required.

Directions

From the Littlemore roundabout on the Oxford Ring Road, proceed into Littlemore towards Sandford on Thames, fork right at the mini-roundabout and after 400 yards you will see a gated entrance and gate lodge to St George's Park on your left. Proceed through the electric gates and bear right into the far square at the end, where the entrance to the subject building is on your left hand side. The visitors parking is found on the right before you reach the garden square where the apartment is located so you are advised to park in this designated parking area and then make the short walk to the apartment WHAT3WORDS Co-Ordinate:-
///coffee.soup.causes

216 Banbury Road, Oxfordshire, OX2 7BY
Tel: 01865 510000 Email: oxford@west-tpc.co.uk <https://www.west-tpc.co.uk>